



GAT MONTHLY MEMBERSHIP PROGRESS REPORT

Results as of: 6/30/2023

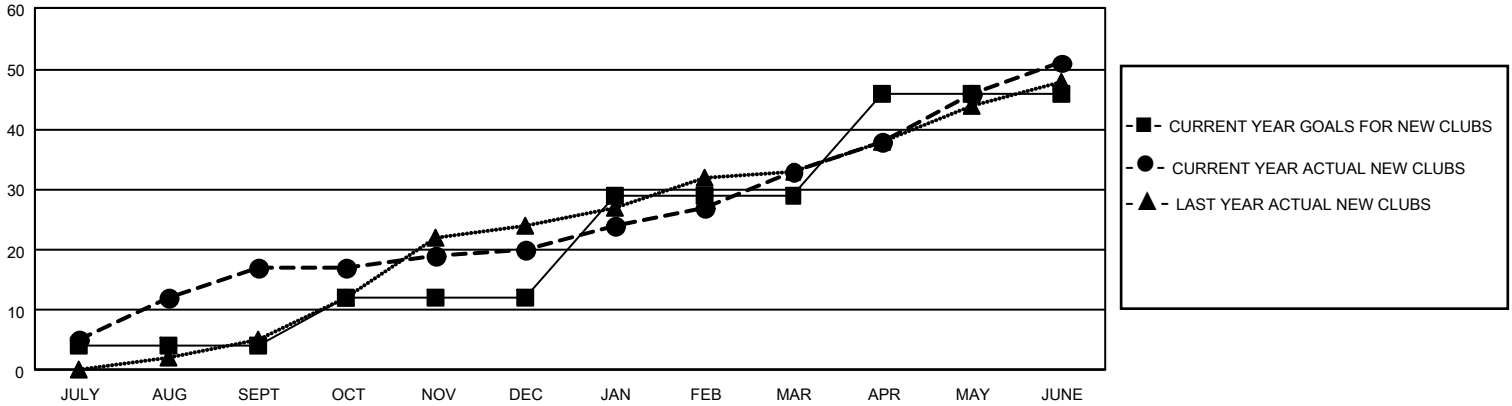
GAT Constitutional Area 7

REPORT DOES NOT INCLUDE CLUBS IN UNDISTRICTED AREAS.

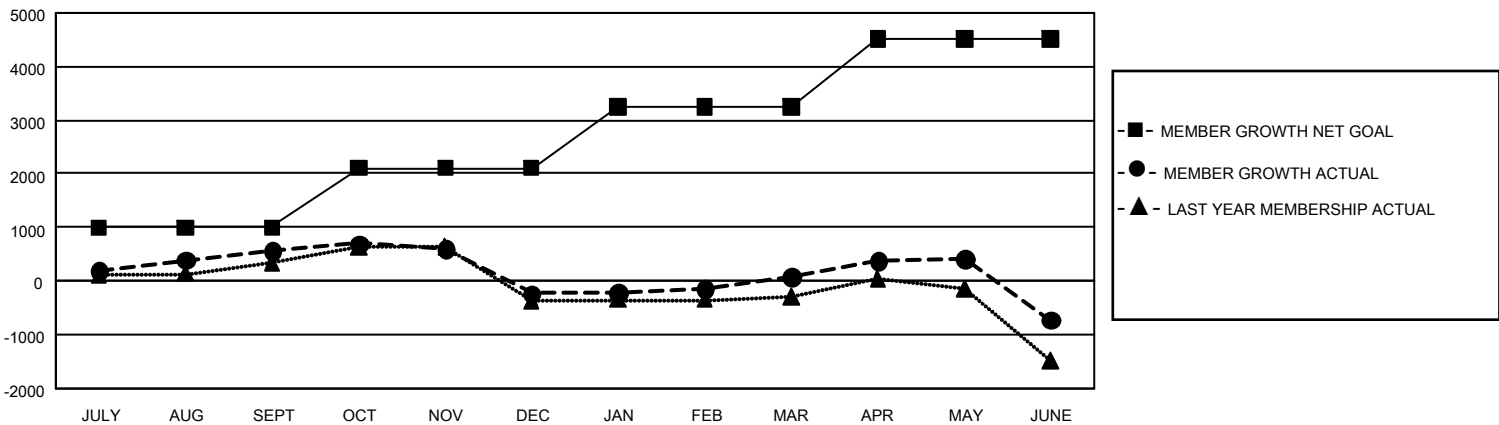
Clubs			
RESULTS FOR 2022-2023			
QUARTER	NEW CLUB GOAL	NEW CLUBS	DROPPED CLUBS
JULY/AUG/SEPT	12	17	13
OCT/NOV/DEC	24	3	15
JAN/FEB/MAR	51	13	2
APR/MAY/JUNE	51	18	25

Members			
RESULTS FOR 2022-2023			
QUARTER	MEMBER GROWTH NET GOAL	MEMBER GROWTH ACTUAL	DROPPED MEMBERS ACTUAL (including transfers)
JULY/AUG/SEPT	996	1,894	990
OCT/NOV/DEC	1105	1,218	1,881
JAN/FEB/MAR	1149	1,442	1,007
APR/MAY/JUNE	1270	2,306	2,825

GOALS AND ACTUAL NEW CLUBS CUMULATIVE



GOALS AND ACTUAL MEMBERS CUMULATIVE



DROPPED CLUBS: 55	
DROPPED MEMBERS	
DECEASED	538
CLUB CANCELLED	185
OTHER	5,985
TOTAL	6,708

1,263 CLUBS OF 1,894 ADDED 1 OR MORE NEW MEMBERS

[CLICK HERE FOR CUMULATIVE MEMBERSHIP DATA](#)

GENDER DISTRIBUTION	
MALE	24,148 (57.66%)
FEMALE	17,714 (42.30%)
NON BINARY	6 (0.01%)
PREFER NOT TO ANSWER	11 (0.03%)
TOTAL FAMILY UNIT MEMBERS	7,155
FAMILY MEMBERS PAYING HALF DUES	3,855